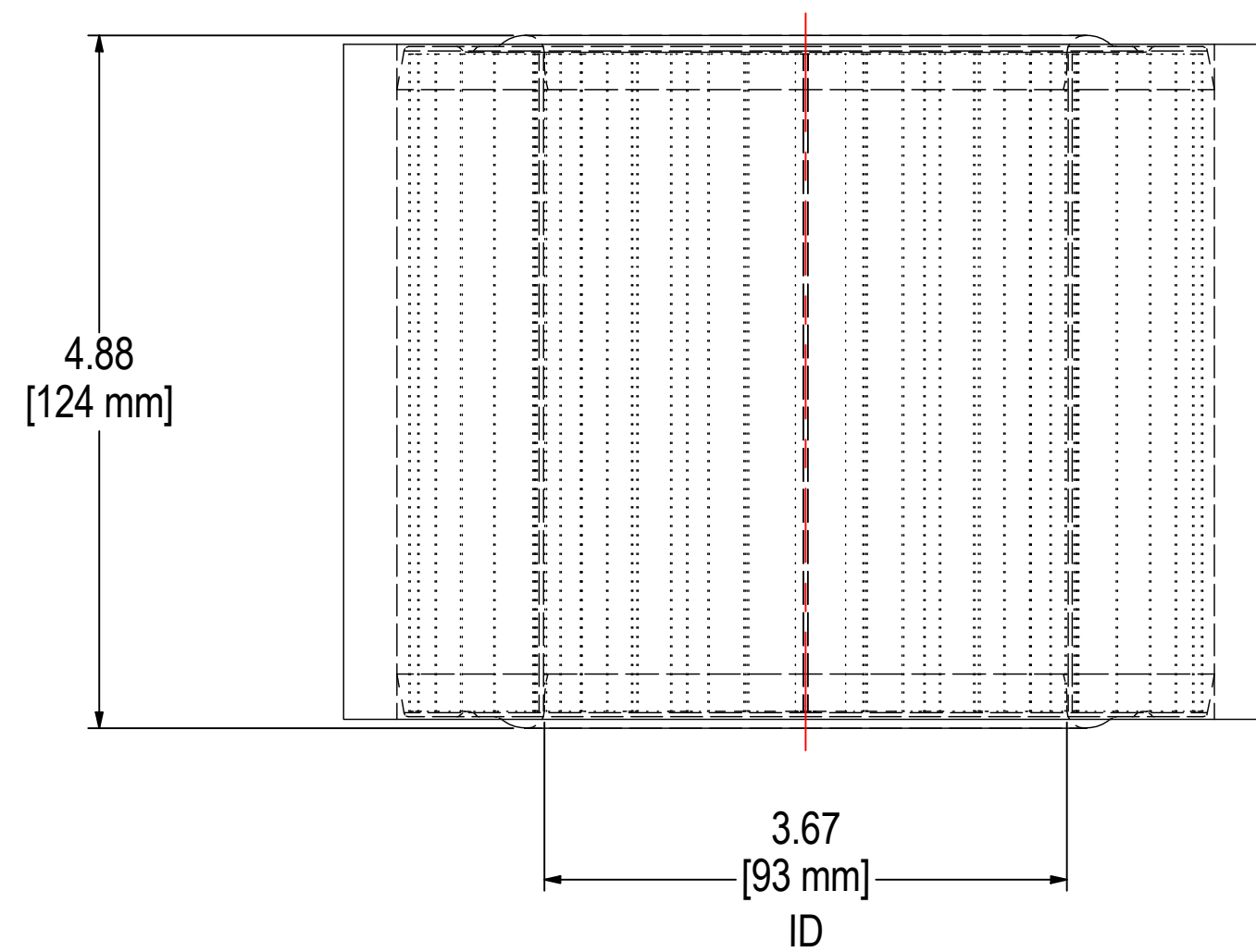
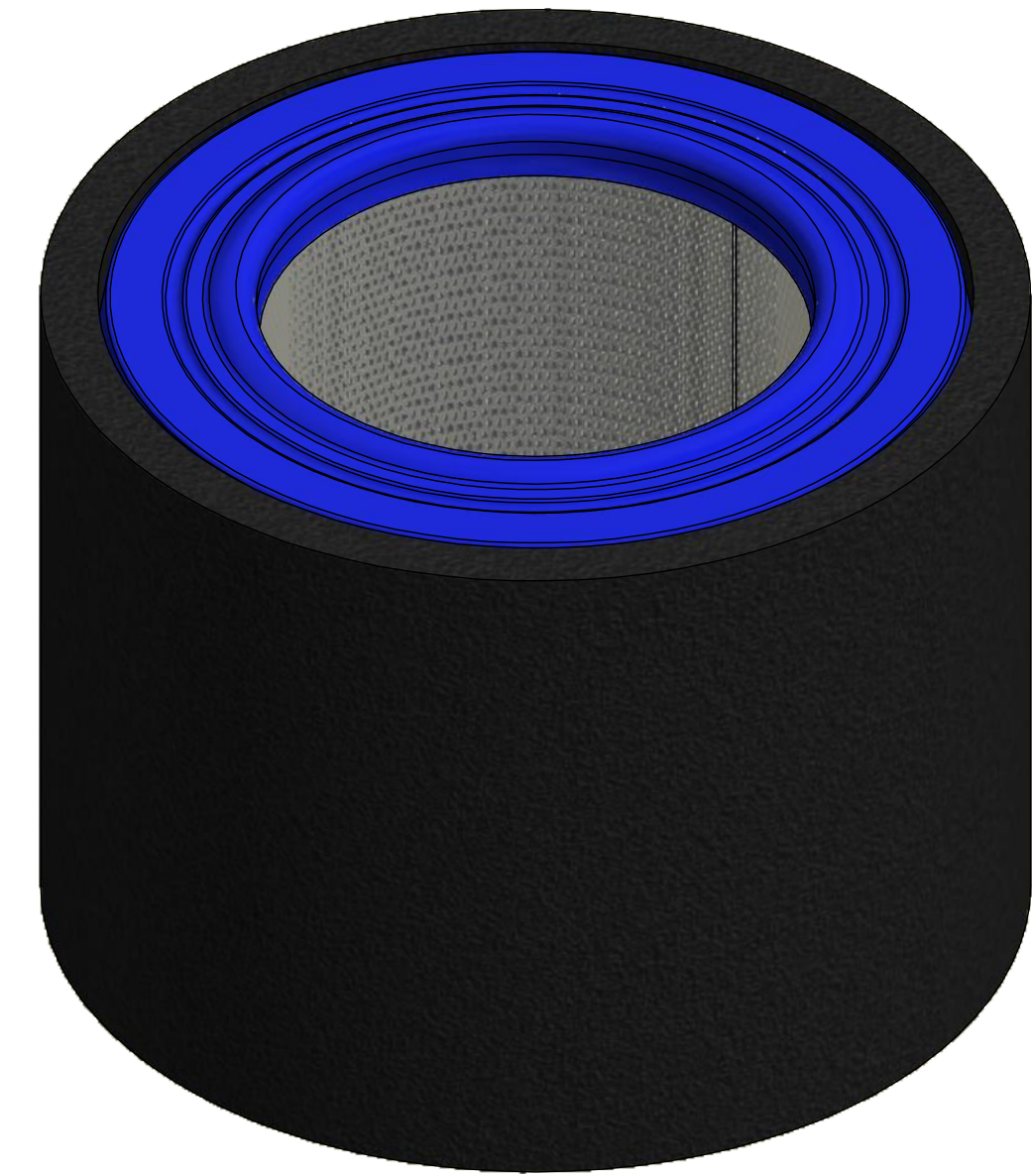
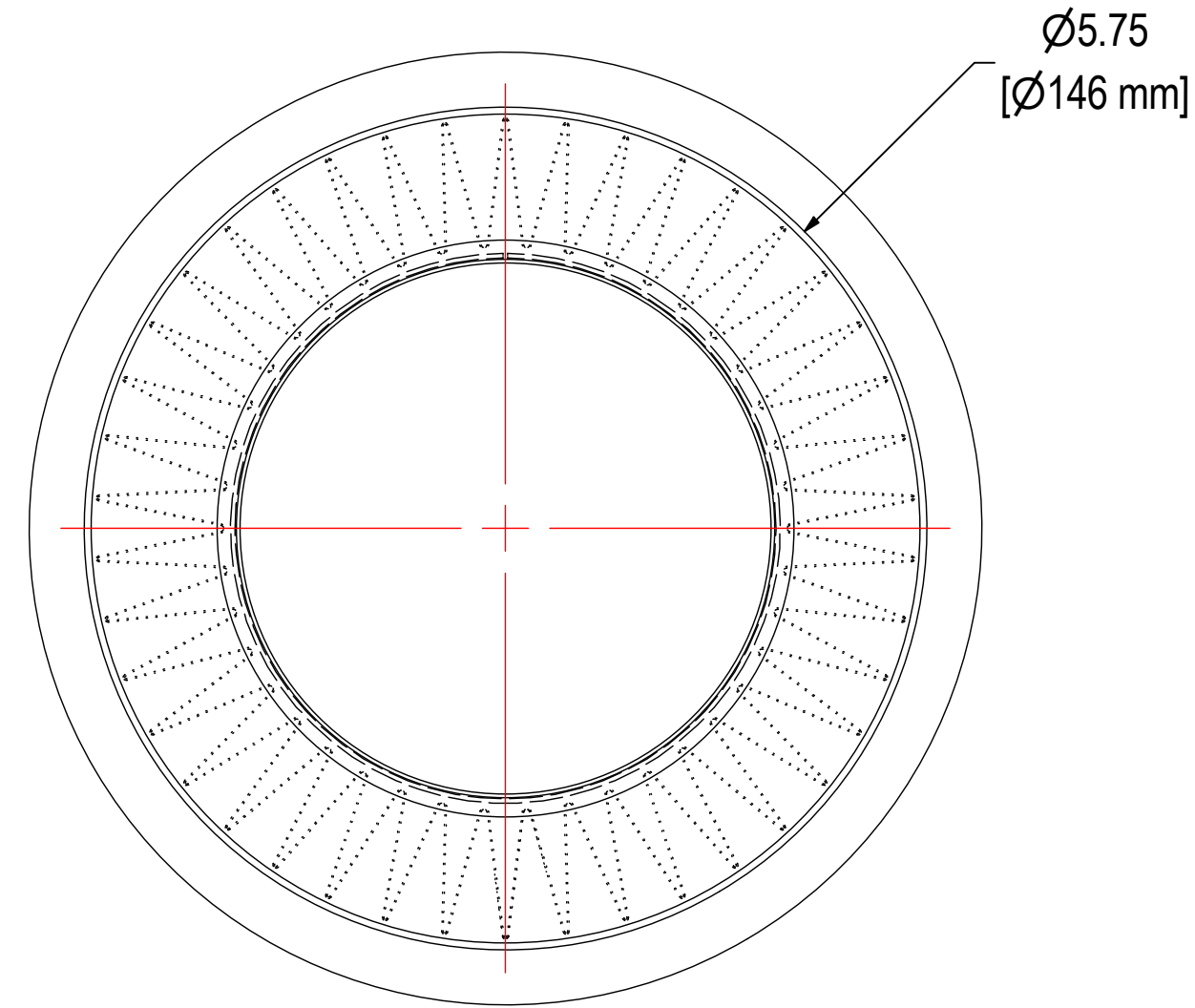


REV	DESCRIPTION	ECN #	CHG BY	DATE	APP'D
A	UPDATED TO 3D		NAS	06/24/19	NAD
B	UPDATED ELEMENT SPECS	18137	TAS	01/22/20	NAD



ELEMENT SPECS		
PART NUMBER	31P	
MATERIAL	POLYESTER	
FLOW RATE	195 CFM	331 m ³ /hr
SURFACE AREA	2.2 ft ²	0.2 m ²
I.D.	3.67"	93mm
O.D.	5.75"	146mm
HEIGHT	4.88"	124mm